

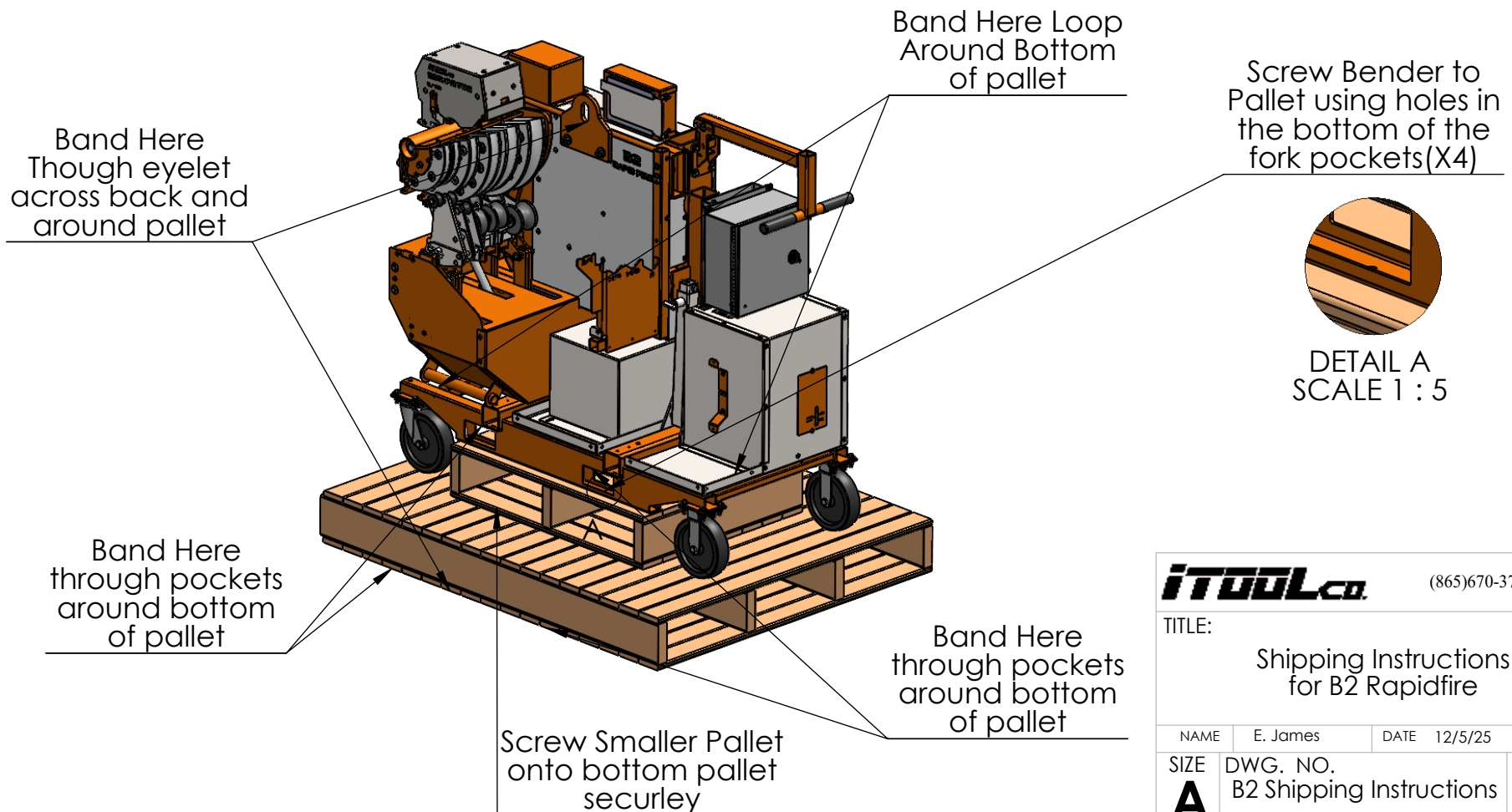
!Please Remove Batteries installed in your B2 Rapidfire before sending it to iToolCo for service!

We CANNOT ship them back to you

Shipping Instructions

When shipping the B2 Rapidfire use screws to attach a smaller pallet to a bigger pallet to set the bender onto as shown. Band the bender onto the pallet using the forklift pockets toward the bottom of the machine and then across the top as called out.

If this is not possible then remove the casters from the B2 Rapidfire. Bag all hardware then box the casters and hardware bag. Include this on the pallet. Band the bender onto the pallet using the forklift pockets toward the bottom of the machine and then across the top as called out.



iTOOLco. (865)670-3713

TITLE:
Shipping Instructions
for B2 Rapidfire

| | | | | |
|-------------|----------|--------------------------|---------|--------------|
| NAME | E. James | DATE | 12/5/25 | REV |
| SIZE | DWG. NO. | B2 Shipping Instructions | | REV |
| A | | | | |
| SCALE: 1:50 | | WEIGHT: 1139.6 | | SHEET 1 OF 1 |